

GRAFTON COUNTY COMMISSIONERS' MEETING

Administration Building
North Haverhill, NH 03774
October 8, 2024

PRESENT: Commissioners Piper, Ahern, McLeod, County Administrator Libby, Assistant County Administrator Burbank, and Administrative Assistant Norcross.

OTHERS: Jim Frohn – County Forester, Chris O'Brien, County Attorney Hornick, Katie Hedberg, Nick De Mayo – via Teams.

Commissioner Piper called the meeting to order at 9:00 AM and began with the Pledge of Allegiance led by Commissioner Ahern.

County Forester Frohn & Prescribed Fire Coordinator Chris O'Brien – Prescribed Fire Project Plan Presentation

Forester Frohn and C. O'Brien gave the attached PowerPoint presentation and answered questions from the Commissioners.

The Commissioners attended Pumpkin Day at the Farm with Woodsville Elementary School.

County Atty. Hornick arrived and gave the following update on her office:

Atty. Hornick reported that there has been a struggle to get caught up in her office with cases due to the loss of one of her prosecutors. She reported that she has eight (8) full-time attorneys budgeted, outside of the two (2) that are paid for by the towns and one (1) paid for by ARPA funds. Atty. Hornick stated that CA Libby had suggested that if she has an opening for a full-time attorney, she should slide the ARPA-funded attorney into that position because the ARPA position is only funded through June 2025. This would allow that attorney to have certainty regarding continued employment when the ARPA funding is gone. They could then advertise for a temporary position as well to fill until the ARPA funding is up. Atty. Hornick explained that there is an emotional piece to the loss of their last prosecutor in their office and the workload that now has to be covered by the other staff. Atty. Hornick further discussed filling the vacant position with the Commissioners and answered questions. The Commissioners agreed to allow her to hire a temporary position.

She reviewed the Superior Court Grand Jury list with the Commissioners and the types of cases they are currently seeing.

Agenda Items:

1. Commissioner Piper asked if everyone had a chance to read the minutes from the September 26th and October 1st meetings. Commissioner Piper stated that she had a couple of small edits on the September 26th minutes.

MOTION: Commissioner McLeod moved to approve the minutes from September 26th as amended. Commissioner Ahern seconded the motion, and all were in favor.

Commissioner Ahern had the following change to a statement in the minutes from October 1st:

- Page 5, Paragraph 2 – Commissioner changed the sentence “Commissioner Ahern asked how much one life is worth” to read Commissioner Ahern asked, “How much is one life worth?”

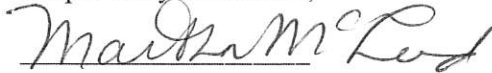
MOTION: Commissioner McLeod moved to approve the minutes from October 1st as amended. Commissioner Ahern seconded the motion, and all were in favor.

2. The Commissioners sign check registers 1037, 1039, 1047.
3. CA Libby submitted the DoC Superior Court Report for the month of September for the Commissioners to review.
4. Memo from Register Monahan – The Commissioners received a memo from Register Monahan requesting that the Commissioners instruct employees to park their vehicles back from the first and possibly second rows to the far west of the employee parking lot for the October 9th Open House and until construction is completed at the front entrance of the building. CA Libby stated that the front parking spots remain open, and she does not see the need for this. Everyone has to enter through the North entrance because the front stairs are blocked off. Commissioner McLeod stated that she does not know if it is necessary, the signage should be adequate. Commissioner Piper asked if there was any motion to be made. There was no motion.

Public Comment—N. De Mayo stated that he thinks the Commissioners have a problem with the internet and that it should be corrected. Katie Hedberg thanked the Commissioners for a wonderful tour of the farm and a trip to the pumpkin patch.

12:07 PM With no further business, the meeting adjourned.

Respectfully Submitted,



Martha S. McLeod, Clerk

Presentation Objectives:

- Update Grafton County of Status of Wildfire Hazard Grant
- Provide overview of RX Fire Policy, Strategy and Tactics.

Grant Outcomes:

- Fire Management Plan
- Prescribed Burn Plan
- Coordination and Bossing of 5 RX burns
- 3 Public Workshops
- Firefighter Training (National Wildfire Coordinating Group NWCWG).

Guiding Documents:

NH Prescribed Fire Council:

- [Planning for Prescribed Burning in New Hampshire: Minimum Recommended Standards for Planning & Implementing Prescribed Burns](#)

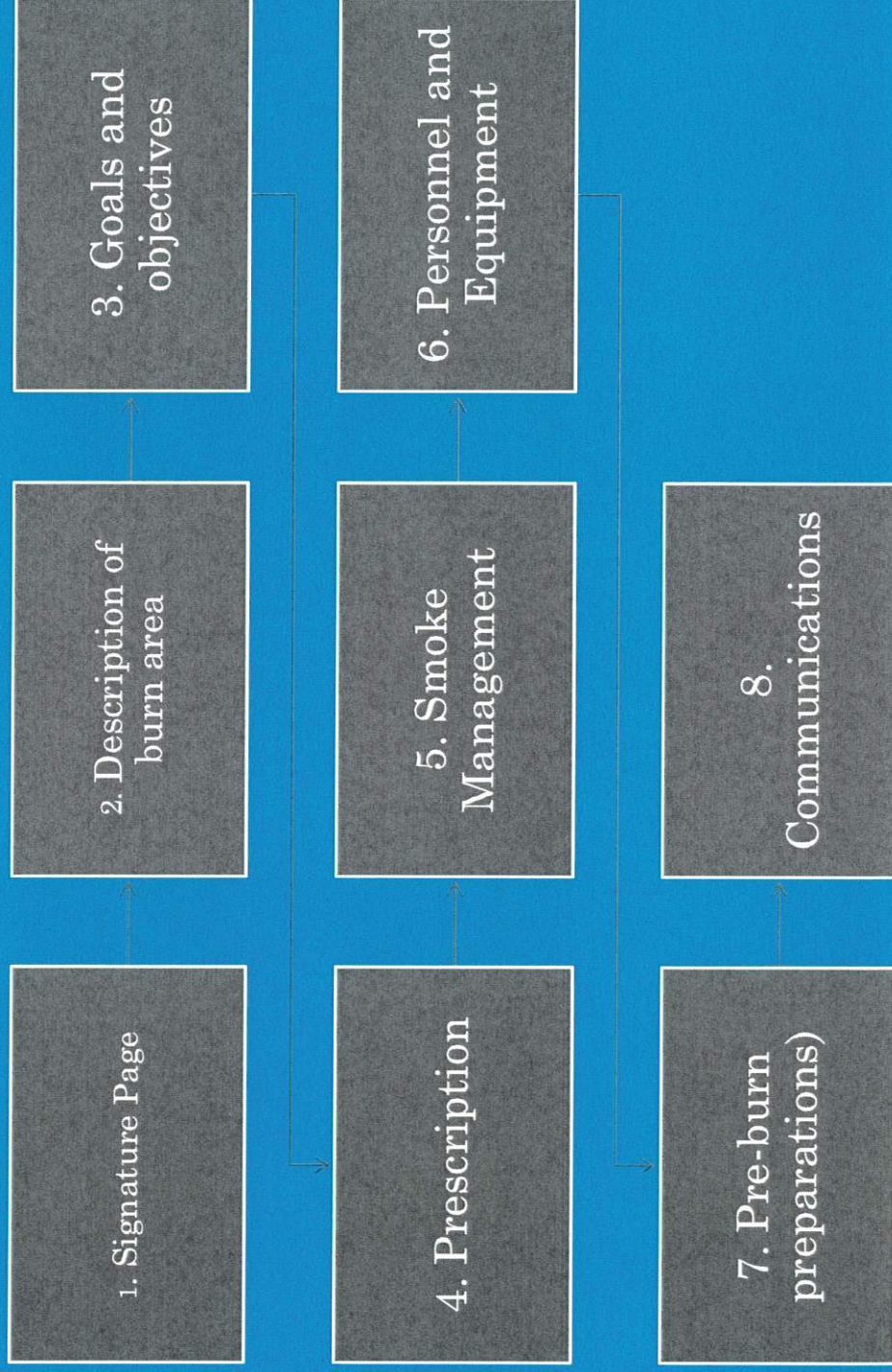
- (Note: I am in the process of editing the above document to more closely align with burn plan and TNC manual)

The Nature Conservancy Manual

- subsection Fire Management Planning

- <https://www.tncfiremanual.org/Planning.htm>

Elements of a Burn Plan



Elements of a Burn Plan

9. Safety
and Medical

10. Ignition

11. Holding

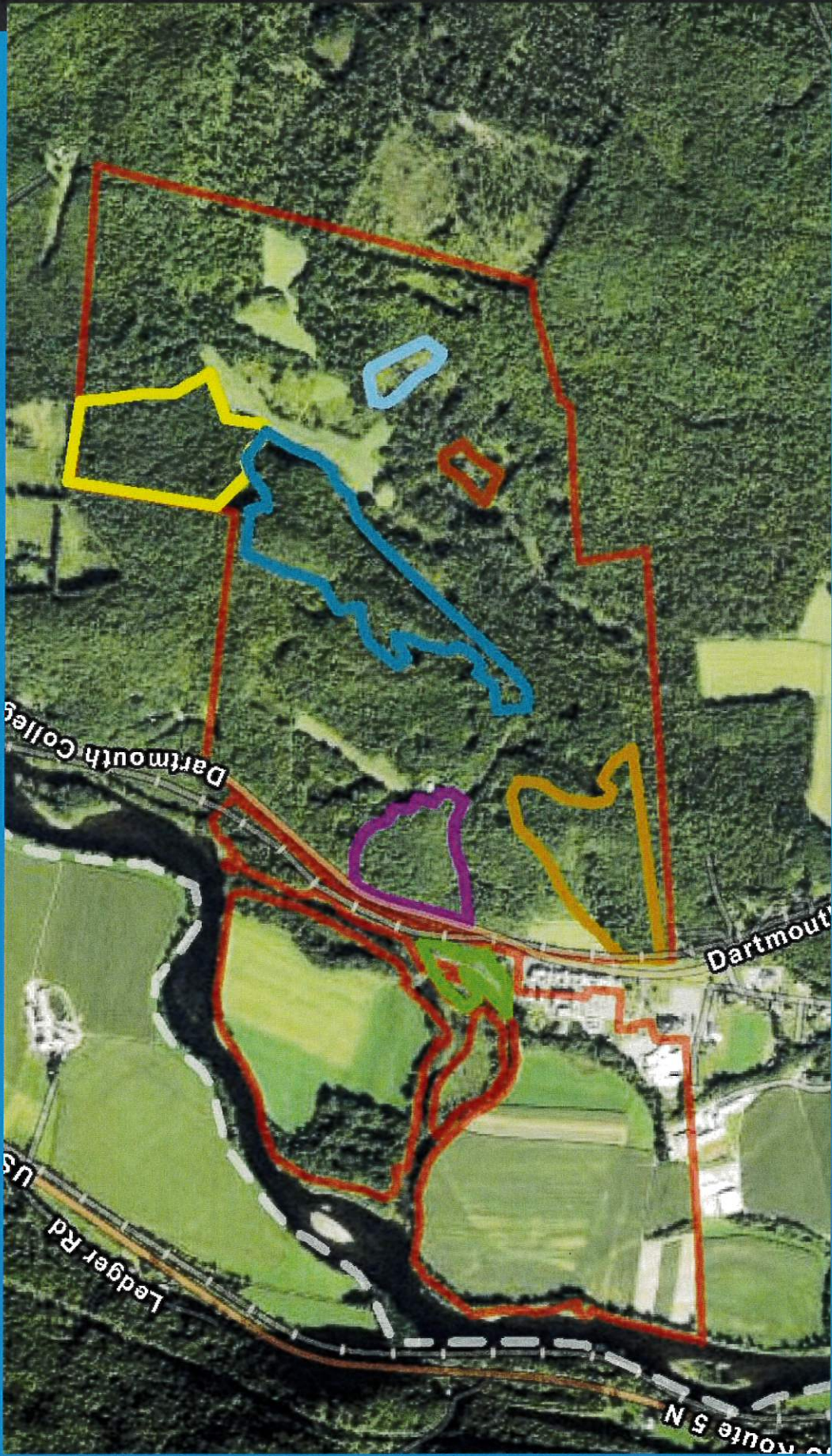
12.
Contingency

13.
Monitoring

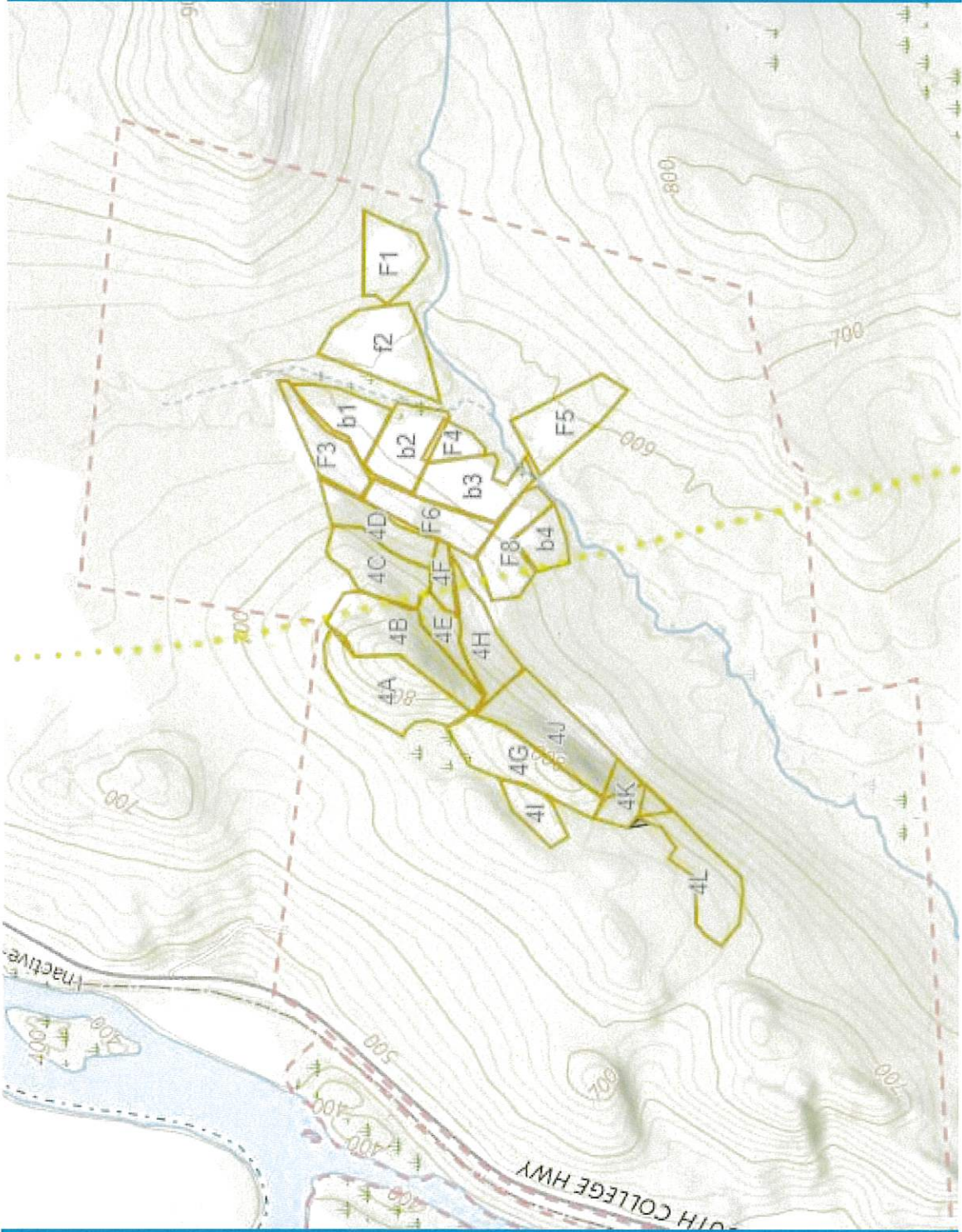
14. Post-burn

16. Complexity

17 Maps

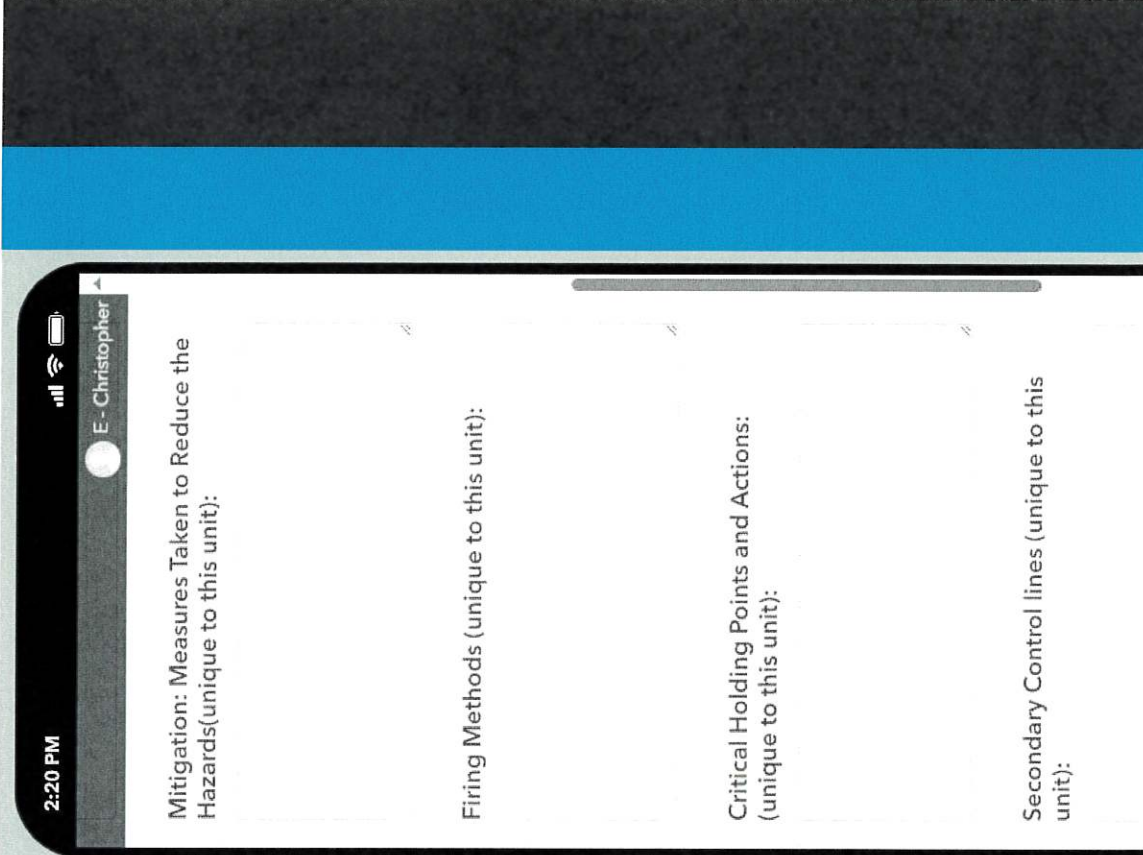
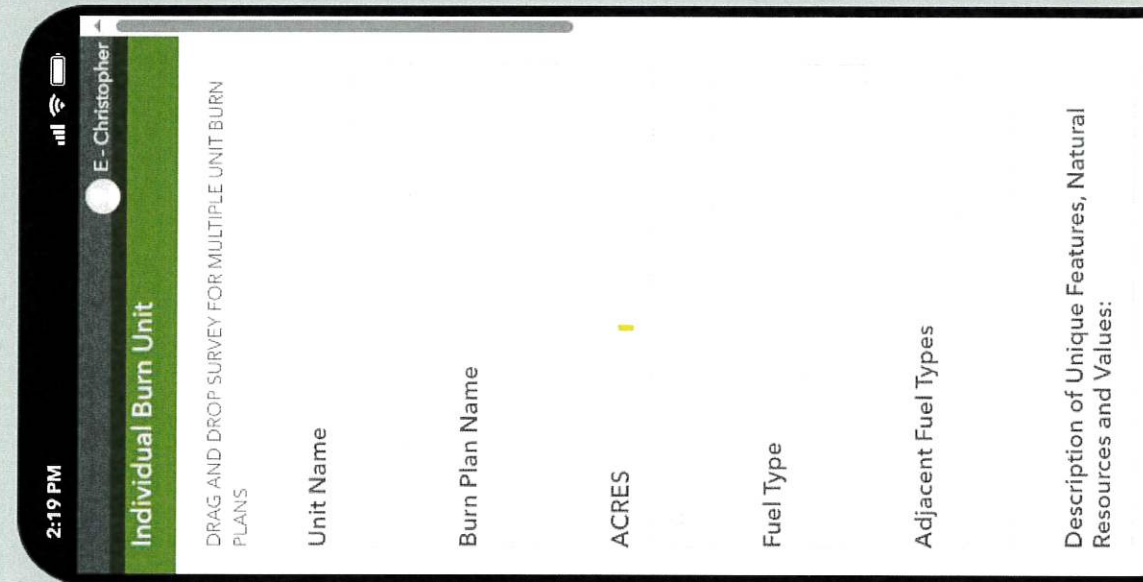


Element 2:



Element 2:

Element 2:



•Restore and maintain Dry appalachian oak forest fire dependent community

Element 3: Goals

• Fire Management Goals

- To maintain current levels of blueberry and promote regeneration where feasible.
- Reduce fuel loads to reduce the probability of a difficult to control wildfire that could threaten adjacent private property and result in ecological damage.
- Restore and maintain dry Appalachian oak forest fire dependent community
- Restore and maintain grass/field dominated wildlife openings

•Restore and maintain Dry appalachian oak forest fire dependent community

Element 3: The Problem?

• Mesophication!

- **Long-Term Ecological Effects of Prescribed Burning and Mechanical Treatments on Eastern Oak Forests**

- https://view.news.fs.usda.gov/?vawpToken=DTTXV3L6GIIURB56IHLBQXI274.130002&utm_source=MarketingCloud&utm_medium=email

- **The Impact of Controlled Burning and Forest Thinning on the Recovery of Tick Populations Over Time (firesciencenorthatlantic.org)**

Element 4: Prescription

Required Parameters:	Low	Preferred	Maximum
Effective Windspeed (mph)	2	3-6	8
1-Hour Fuel Moisture (%)	6	8-14	16
10-Hour Fuel Moisture (%)	10	12-20	25
100-Hour Fuel Moisture (%)	10	10-20	None
Air Quality Index	0	0	100
Atmospheric Mixing Height (ft)	1,500 ft AGL	>1,500 ft. AGL	Unlimited
Wind Direction(s)	Northwest, West, Southwest		

Fuels



Element 4: Prescription

Guidance Parameters:	Minimum	Preferred	Maximum
Air Temperature (°F)	35	55-75	85
Relative Humidity (%)	27	35-55	60
Days Since Last Appreciable Rain	1	Minimum of 2	6
20 ft wind speed (mph)	2	5-12	18
Keetch Byram Drought Index	50	100-250	300
Live fuel moisture	30	100-200	300

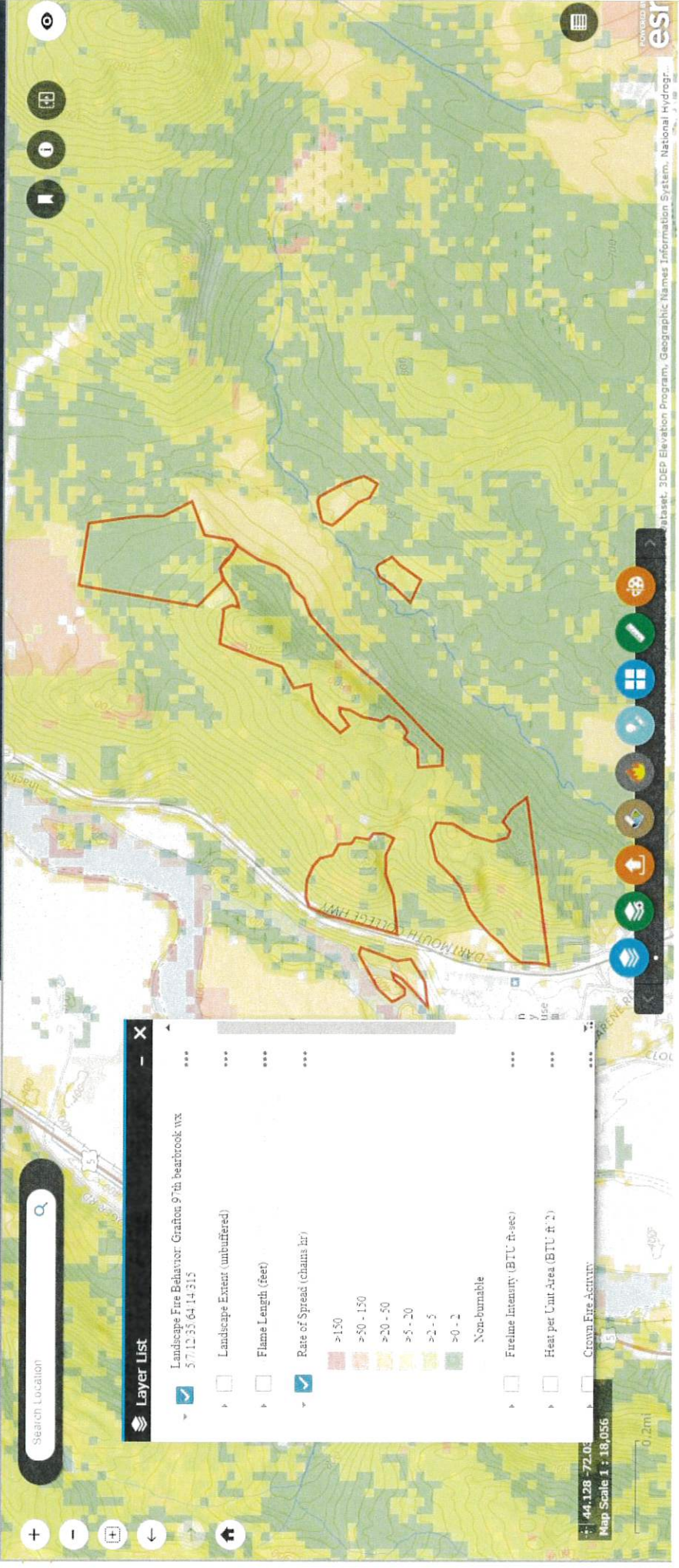
†† Burns may be conducted exceeding 6 days since rain when other factors are evaluated and determined to suggest suitable conditions, including the State Fire Class Danger Rating (e.g. below Class 4), the Haines

2 miles NNW of North Haverhill, NH (Elevation: 507 ft)

[Download Weekly Summary as PNG](#)

North Haverhill, NH Weekly Summary

	Mon Oct 7	Tue Oct 8	Wed Oct 9	Thu Oct 10	Fri Oct 11	Sat Oct 12	Sun Oct 13	Mon Oct 14
Max Temp, °F	56	57	57	50	58	63	54	50
Min Temp, °F	51	41	36	36	40	42	40	38
Max RH, %	96	100	100	100	100	96	93	100
Min RH, %	90	53	53	71	57	54	61	71
Max Dewpoint, °F	51	48	41	42	44	47	42	42
Min Dewpoint, °F	49	40	36	36	39	39	36	37
Max Wind, mph	2	3	6	8	6	7	5	6
Min Wind, mph	1	0	0	3	1	1	2	2
Max Wind Gust, time/dir.	11 PM ↗	12 PM ↗	2 PM →	8 AM ↗	11 AM ↗	2 PM →	10 AM ↗	2 PM ↗
Max Wind Gust, mph	6	7	12	15	12	14	9	12
Min Wind Gust, mph	2	0	0	7	2	3	5	5
Max Cloud Cover, %	72	81	86	84	83	72	76	90
Min Cloud Cover, %	19	17	37	70	18	31	48	65
Max Prob. of Precip., %	6	23	36	27	11	20	41	42
Max Haines	3	4	3	3				
Max LAL	1	1	1	1	1			
Max Mixing Height ft	942	6034	5351	4643				





IFTDSS

My Home

My Workspace

Map Studio

Playground

FTEM



My Home

My Workspace

Map Studio

Playground

FTEM

Home

Workspace

Map Studio

Playground

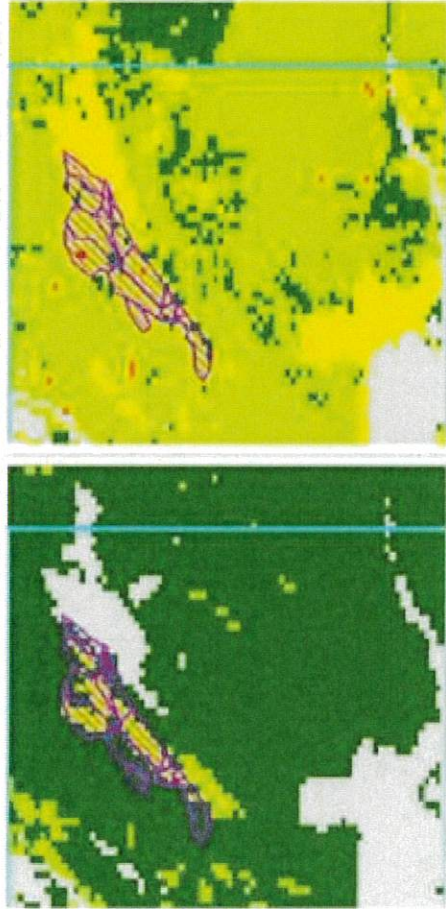
FTEM

Select Layer to Display

Flame Length (feet)

Zoom to AOI burn unit

- >25
- >11 - 25
- >8 - 11
- >4 - 8
- >1 - 4
- >0 - 1
- Non-burnable



Copy Run

Copy Run

Model Output

Grafton high
1625403003002315

Grafton low 6101030608315

Element 5 : Smoke

List downwind/down drainage smoke sensitive areas:

West: Dartmouth College Highway and Grafton Country Farm Complex including a Nursing Home and Jail are located adjacent to the project area.

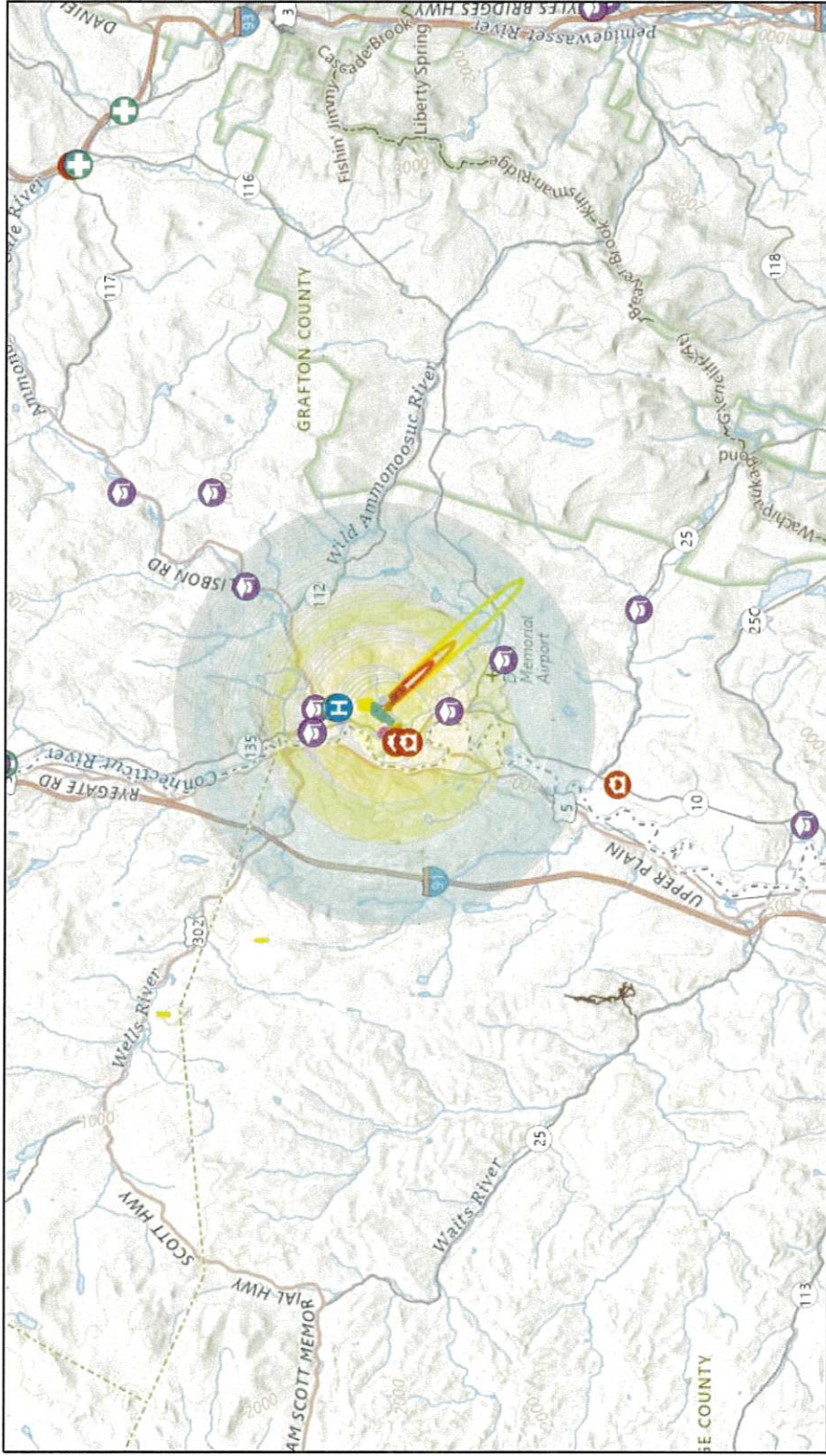
Southeast: Residential area exists along horse meadow road and Dartmouth College road units distance vary from 1000 to 6000 feet. An Airport is approximately 2.5 miles.

South: One farm exists along Mace Hill Road. This farm is down drainage for the majority of prescribed fire units approximately 1 mile from burn units. Additional homes and recreational parks exist between Mace Hill Road and North Haverhill village.

East: Several farms exist along Briar Hill Road west of the burn units approximately 1.5 miles.

North: The village of Woodsville lies 1 mile north of the burn units.

Smoke Sensitive Area Map Grafton Farm



1 Mile circle around units

1
2
3
4
5

VSmoke web prediction

Moderate
 Unhealthy for Sensitive Groups
 Unhealthy
 Very Unhealthy
 Hazardous

Smoke Sensitive Areas

H Hospital
S School
R Residents Long care or similar
+ Doctor/office/Health Care Facility

0 1.75 3.5 5.5 7 mi
 0 2.75 5.5 11 km

USGS The National Map, National Boundaries Dataset, 30EP Elevation Program, Geographic Names Information System, National Hydrography Dataset, National Land Cover Database, National Structures Dataset, and National Transportation Dataset; USGS Global Ecosystems; U.S. Census

ArcGIS Web AppBuilder

USGS The National Map, National Boundaries Dataset, 30EP Elevation Program, Geographic Names Information System, National Hydrography Dataset, National Land Cover Database, National Structures Dataset, and National Transportation Dataset; USGS Global Ecosystems; U.S. Census



Element 5: Smoke

Element 6 : Personnel & Equipment

Resources	RX	MOP-UP	PATROL
BURN BOSS TYPE	RXB2	RXB2	OPT
Fire Effects Monitor/WX	OPT	OPT	OPT
Firing Boss	OPT	N/A	N/A
Ignition Crew (RXCM/FFT2)	1	N/A	N/A
Holding Boss (FFT1orICT5)	2	1	1
RXCM/FFT2	1	1	1
Public Affairs	OPT	OPT	OPT
Engine or UTV with 50 Gallon +	2	1	1

Element 6 : Firefighting Line Rates

FUEL TYPE	ANY FF	ENG +2	ENG +3	ENG +4	ENG +5	DOZER 3
N/A	0	0	0	0	0	0
GR3/FM3	0.7	5	10	14	16	70
TL2/FM8	10	30	40	50	60	70
TL6/FM9	8	25	40	50	60	55
TU2/FM10	3	8	12	16	20	10
SH3/FM7	0.7	5	12	16	20	55
TL3/FM8	2	8	15	20	24	70
SB2/FM11	1	8	12	16	20	25

SQUARE PERIMETER ESTIMATES

ACRE	FEET	CHAINS
0.25	417.00	6
0.50	590	9
0.75	722	11
1.00	835	13
5.00	1867	28
10.00	2640	40
20.00	3743	57
50.00	5280	80

Element 6 : Firefighting Training

- NH FIRE ACADEMY FORESTY TRAINING: 1 hour of online training 8 hours of field training.
- NWCG FFT2 /NH RXCM 32-38 hours of classroom or online training plus 8 hours of field training.
- NWCG FFT1/ NHRX Advance Firefighter: Several years of experience an additional 40 hours of training in Chainsaws, Pumps and Squad Boss. Completion of Taskbook (20-60 days)
- NWCG Single Resource Boss: 3-5 years experience plus an additional 80 hours of training in Fire Behavior, Ignition Operations, Leadership, Crew/Engine Boss, Fire business Administration. Completion of a Taskbook (20-60) Days.
- NWCG Incident Commander type 4: 16 hours of training plus completion of a taskbook 20-60 days of Taskbook assignments
- NWCG RXB2: 160 hours of training in Firehavior, Burn Planning and Implementation and Smoke Management. 20-60 days of taskbook assignments.

Element 7 : Pre-Burn Prep & Notifications

- Notifications (includes):
 - email notification one day prior to burning with map and unit description
 - phone notification morning of prescribed burn.

Firebreak preparations: 6' wide leaf blown line...

Element 8: Communications & Public Relations

Includes:

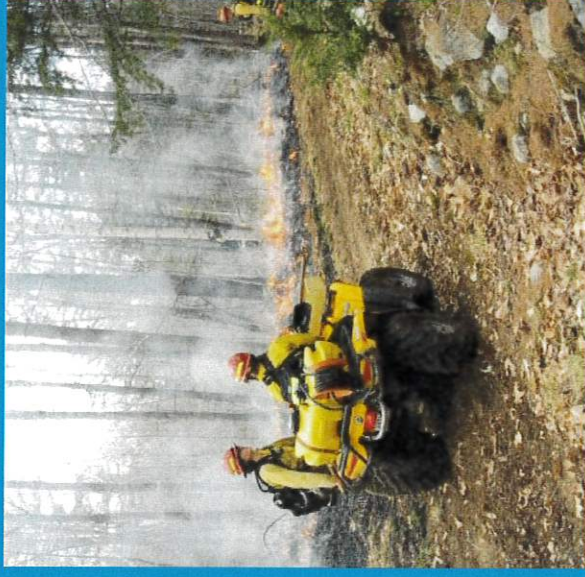
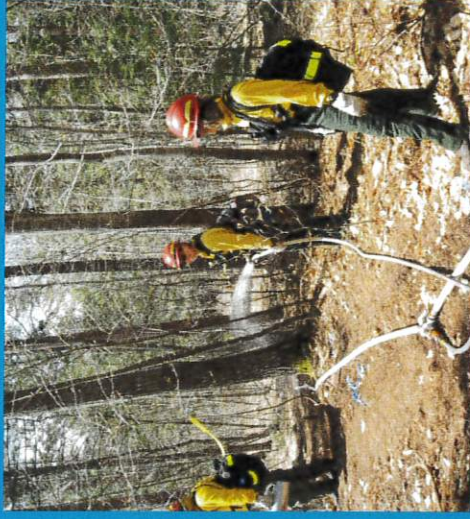
- Radio Plan
- Public Access/ Conflicts with Public use:
- Public Relations

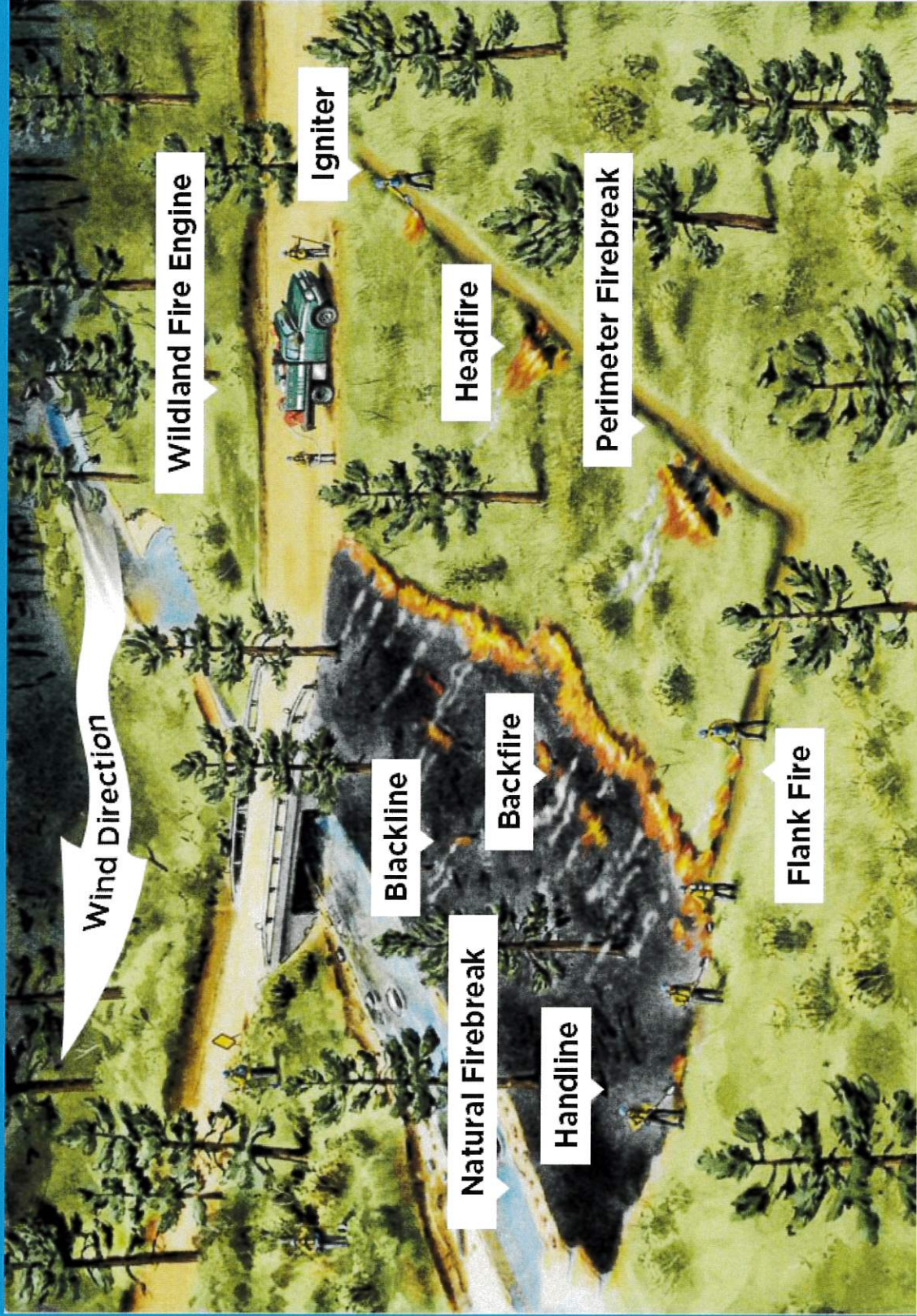
Element 9: Safety and Medical

Includes:

- Coordinates and 911 Address for Ambulance
- List of Pertinent Hospitals and Ambulances:
- Safety Zones and Escape Routes
- Unusual Hazards to the Crew

Element 10,11,12: ignition/holding/contingency





Wind Direction

Wildland Fire Engine

Igniter

Headfire

Perimeter Firebreak

Blackline

Backfire

Flank Fire

Natural Firebreak

Handline

Element 12 : Contingency

Management Action Point	Action Needed
If fire spots or crosses containment any lines and immediate containment is not expected (10 minutes)	NH Forest & Lands IC to contact contingency resource identified in the burn plan.
If fire is predicted to leave County Farm Property	NH Forests & Lands IC to contact Haverhill Fire for additional resources.
“ “	Contact Chief Ranger and/ or duty Officer
If smoke impacts Rt 10	Contact Haverhill Police Department and County Sherrif
Medical emergency	Identify Medical Incident Commander, Provide First Aid. Contain burn as quickly as possible.
“	Contact Chief Ranger and/ or duty Officer

Element 13: Monitoring

The following information is suggested to be collected after the burn by the burn boss.

- Resources sign in sheet with Positions filled during the burn.
- Weather Reports: Point or Spot WX & hourly wx observations.
- Smoke Report: Description of smoke behavior. Collect data from Purple air Monitors

Element 14: Post Burn Activities

Mop-Up: The small unit size should allow mop-up to be completed prior to nightfall. The proximity of the nursing facility will require overnight coverage if mop-up is not completed. Mop-up parameters will be set by the Burn Boss on the day of the burn based on fire behavior, fuel consumption and amount of smoke as well as current and predicted weather. The burn will be checked in the morning and a determination will be made to continue mop-up or declare it 'out'. Mop-up will ensure that the burn remains contained and minimizes residual smoke. Low impact (MIST) techniques will be utilized in the burn area and adjacent areas to minimize resource damage.

Fireline or other Rehabilitation: Removal of old barb wire fence that has been burned should be considered part of rehabilitation plan. At the discretion of the UNH Coop Forester natural barriers will be placed on Fireline's to avoid "boot leg" trail establishments

Element 16: Complexity Analysis

The Prescribed Fire Complexity Rating System was developed to assist personnel in determining a relative complexity of any single prescribed fire project. The system was designed for interagency application and provides the local prescribed fire manager the opportunity to include local considerations in the decision process.